

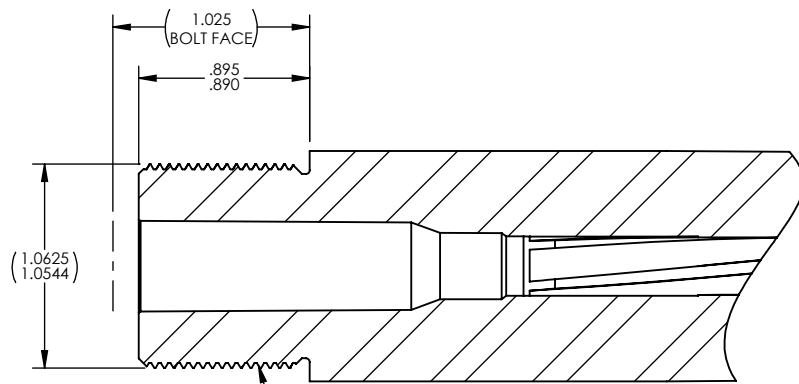
4

3

2

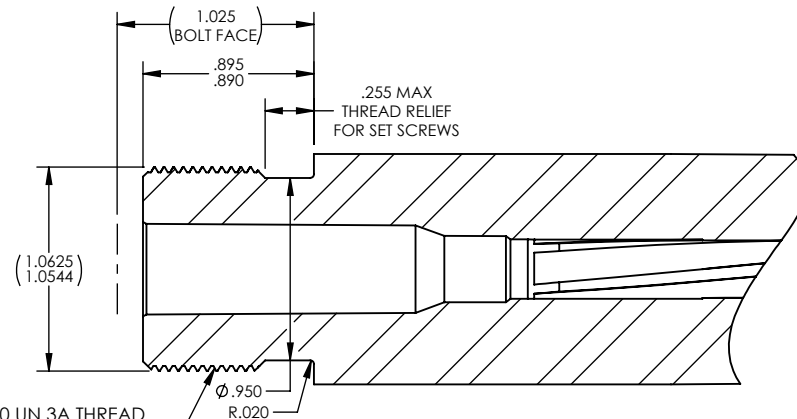
1

REVISIONS			
REV.	DESCRIPTION	DATE	APPROVED
A	RELEASED FOR PRODUCTION	8/8/2025	GPG



1.0625" - 20 UN 3A THREAD
MAJOR DIAMETER: 1.0625 MAX - 1.0544 MIN
PITCH DIAMETER: 1.0300 MAX - 1.0266 MIN

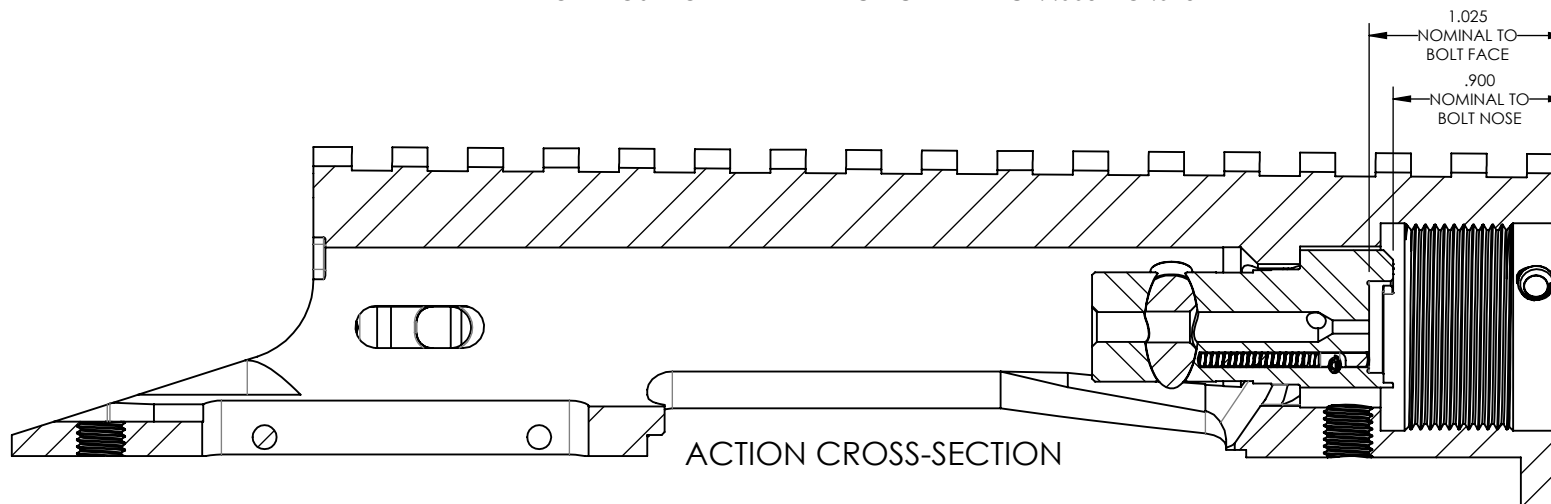
STANDARD BARREL TENON



1.0625" - 20 UN 3A THREAD
MAJOR DIAMETER: 1.0625 MAX - 1.0544 MIN
PITCH DIAMETER: 1.0300 MAX - 1.0266 MIN

OPTIONAL TENON FOR QUICK CHANGE BARREL (SET SCREWS ON RECEIVER)

BOLT NOSE TO BARREL BREECH CLEARANCE: .005" TO .015"



ACTION CROSS-SECTION

UNLESS OTHERWISE SPECIFIED:
DIMENSIONS ARE IN INCHES
TOLERANCES:
FRACTIONAL $\pm 1/16$
ANGULAR: MACH $\pm .5^\circ$
TWO PLACE DECIMAL $\pm .010$
THREE PLACE DECIMAL $\pm .005$
FOUR PLACE DECIMAL $\pm .0005$

WARWICK MACHINE AND TOOL CO. INC

PROPRIETARY AND CONFIDENTIAL
THE INFORMATION CONTAINED IN THIS
DRAWING IS THE SOLE PROPERTY OF
WARWICK MACHINE AND TOOL. ANY
REPRODUCTION IN PART OR AS A WHOLE
WITHOUT THE WRITTEN PERMISSION OF
WARWICK MACHINE AND TOOL IS
PROHIBITED.

WTL 3-LUG BARREL TENON

SIZE	DWG. NO.	REV
A		A
DO NOT SCALE DRAWING	NAME	DATE
SCALE: 1:1		SHEET 1 OF 1

4

3

2

1